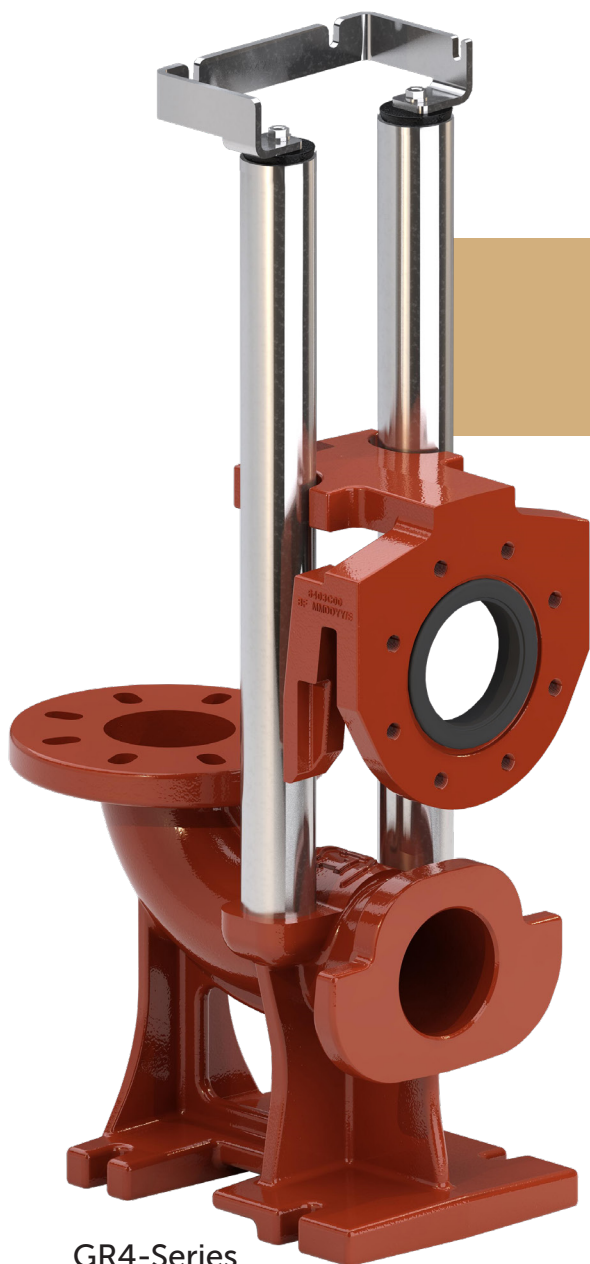




Engineered**Products**

## GR3/GR4-Series Guide Rails

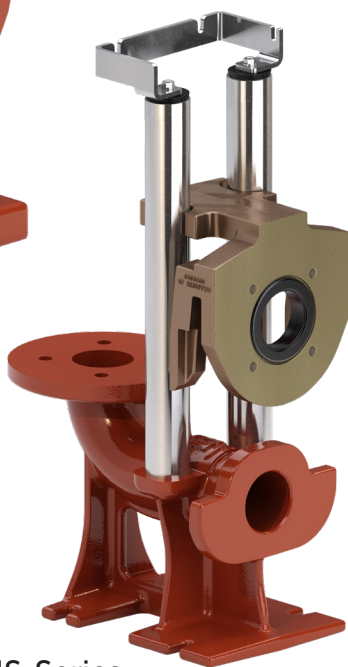
- Class 30 heavy cast iron construction
- Sized for 2" rail pipes (not included)
- Durable nitrile sealing grommet
- Upper stainless steel rail support and mid support bracket included
- Powder coated for corrosion resistance
- Available in 3" and 4" ANSI®
- Maximum pump weight 750 lbs (340 kg)



GR4-Series



Mid Support  
Bracket



GR3NS-Series



Non-sparking "NS" models feature bronze claw for installation in hazardous locations

Proudly built in the USA with  
US and global components



# GR3/GR4-Series Guide Rails

## Specifications and Dimensional Data

**Material:** Class 30 Gray Cast Iron (Bronze claw on "NS" models)

**Weight:** See chart for model-specific information

**Seal:** Heavy Duty Nitrile

**Rail Size:** 2" (Not Included)

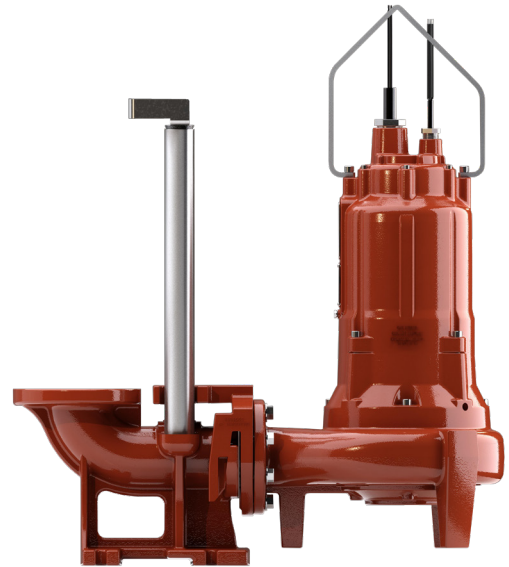
**Discharge:** All flanges are machined to ANSI 150 lb specifications  
(See chart for model-specific information)

**Maximum Pump Weight:** 750 lbs

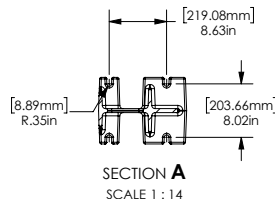
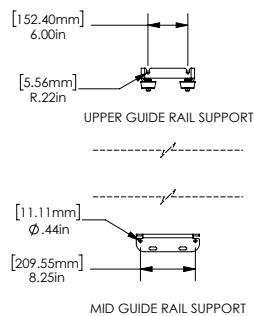
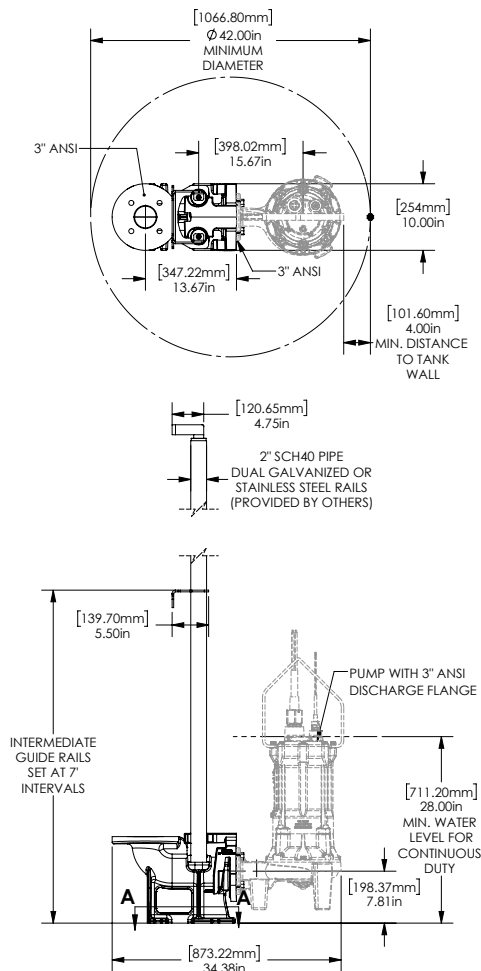
**Upper Rail Support:** Stainless Steel

**Mid-Rail Support:** Stainless Steel

**Claw Attachment Bolts:** 5/8" - 11 x 1.5" Stainless Steel



**GR3-Series  
Dimensional Data**



**GR4-Series  
Dimensional Data**

